

M860

MULCHER



APPLICATION VERSATILITY.

The Weiler 624 brushcutter and 825 mulcher are available from the factory and are optimized for the M860. Rugged structures, reinforced skids, and internal abrasion-resistant plating minimize downtime and repairs. All daily service points are at ground level.



SERVICEABILITY.

Ground level fuel fill, electric hydraulic oil fill pump, four-sided access to the engine and hydraulic pumps, as well as a tilting cab provide full access to the interior of the machine delivering excellent serviceability.



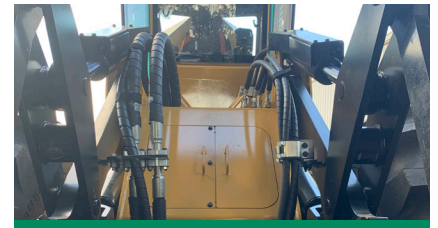
OPERATOR COMFORT.

A quiet and spacious cab with a powerful HVAC system and rear view camera keep operators comfortable and productive. The premium seat, wide leg room near the joystick mounts, and overall machine balance provide a superior ride.



PRESSURIZED COMPARTMENTS.

The machine is segmented into separate compartments that are pressurized to prevent debris from entering the machine. Perforated panels keep the machine components at cooler temperatures longer and along with heavy duty steel hinged belly pans reduce cleaning time.



WORK ZONE VISIBILITY.

A clean three-piece front windshield and sleek hose routings allow the operator to see the work zone easily without having to strain or reposition the machine. This minimizes operator fatigue and leads to more productivity.



GREATER DURABILITY & RELIABILITY.

Rugged frames with integrated steering cylinder mounts and a center hitch field-proven for nearly 20 years are built for the harshest applications. The large cooling system keeps the engine and hydraulics cool, extending component life.

M860 SPECIFICATIONS

Engine Model	Cat® C9.3B Tier 4 Final	Wheelbase	125.0" 3175 mm	Cutting Path - 624	8' 0" 2.44 m
Gross Power	375 hp 280 kW	Ground Clearance	24.7" 627 mm	Cutting Path - 825	8' 4" 2.54 m
Engine Speed	1880 rpm	Transport Width	9' 11" 3.03 m	Max Single Cut Diameter - 624	8.0" 203 mm
Weight	38,450 lb 17 440 kg	Transport Length	29' 11" 9.12 m	Max Single Cut Diameter - 825	16.0" 406 mm
Fuel Capacity	130.5 gal 494 L	Travel Speed (low)	0-5.2 mph 0-8.4 km/h	Max Mowing Diameter - 624	4.0" 102 mm
DEF Capacity	11.8 gal 44.7 L	Travel Speed (high)	0-12.3 mph 0-19.8 km/h	Max Mulching Diameter - 825	16.0" 406 mm
Hydraulic Tank Capacity	43.0 gal 163 L				

Base configuration includes 30.5L-32 26PR tires, winch ready, and 825 mulching head.

POWERTRAIN

Cat C9.3B engine certified to EPA Tier 4 Final
Primary and secondary fuel filters, including water separator
Electric fuel priming pump
Electric fuel transfer pump
Centrifugal engine air pre-cleaner
2-Stage engine air cleaner
Cross-flow cooling system with side by side cores
Swing out air conditioner condenser
Hydraulically driven, on demand reversing cooling fan
Electronically driven, reversing pressurizing fan
2-Speed hydrostatic ground drive
Momentary front axle differential lock
On/off rear differential lock
Heavy-duty driveshafts
Lubed for life universal joints and greasable center driveshaft joint
Spring applied, hydraulically released parking brake

OPERATOR ENVIRONMENT

Enclosed OPS/FOPS/ROPS certified cab
Reverse slope 3-piece windshield
High capacity HVAC system
Pressurized water tank
Air suspension seat with harness seat belt
Joystick steering controls
Weiler programming system
Adjustable operator controls
Attachment float control
Road steer mode
Creep mode
Terrain selection mode
AM/FM/Bluetooth Radio
Backup camera with 10" screen
24V to 12V converter and two 12V power ports

ELECTRICAL

24-volt electrical system with two 12-volt batteries
Main disconnect switch with Diesel Exhaust Fluid (DEF) purge indicator light
Display monitor and programmable operator controls
LED working lights

SALES AND SERVICE

Sold and serviced exclusively through Weiler Forestry dealers worldwide

WEILERFORESTRY.COM

HYDRAULICS

PowerDirect Plus system
Load-sense hydraulics
Variable displacement pumps
Closed loop attachment system with 71 gallons of total oil volume
113 gpm (428 lpm) at 6,000 psi (41,369 kPa) attachment pump
High performance, multi-functioning main control valve
Two dedicated hydraulic coolers
Long life, in-tank hydraulic filter
Electric hydraulic oil fill pump

OTHER STANDARD EQUIPMENT

Heavy-duty double walled box section frames
Rear mounted tow hooks
Dual tapered roller bearing upper and lower center hitch
Chrome plated lift arm and tilt pins
Ecology drains (engine oil, engine coolant, hyd tank, fuel tank, axles)
Tilt cab
Under Cab Water Tank
Pressurized engine, hydraulic, and Clean Emissions Module compartments
Ground level fuel fill
Single side engine service
S-O-S sampling ports

OPTIONAL EQUIPMENT

Retrieval Assist Winch
Strobe, Turn Signals & Brake Lighting
Water Tank Fill w/RV Antifreeze Mix
CB Radio
Product Link™ (PL243 Cellular or PL631 Satellite)
Fire Extinguisher
Attachment Quick Coupler Connections
28L x 26 Tires - Overall Width 117.0" (2970 mm)
30.5L x 32 Tires - Overall Width 119.1" (3025 mm)
67 x 34 Tires - Overall Width 128.7" (3270 mm)
624 Brushcutter
825 Mulcher

WARRANTY

12 months standard, extended warranty available

Materials and specifications are subject to change without notice.
Featured machines and photos may include optional equipment. All rights reserved.

M860, SS (06-2021)