

B670A

WHEEL FELLER BUNCHER



SOLID STABILITY & TOPNOTCH RIDE.

The transverse mounted engine, low center of gravity, and new wider axles provide rock solid stability. With the cab sitting between the axles instead of close to the front frame, the machine delivers a topnotch ride for the operator. Improved foot pedal angles also increase the operator's comfort.



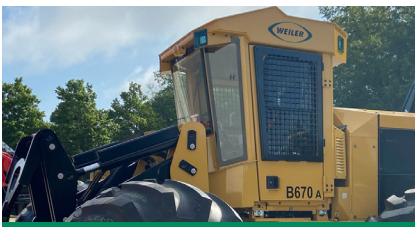
APPLICATION VERSATILITY.

The balance of a short wheelbase, power, stability, agility, and multiple saw head offerings, including the industry's only side cut saw, allow seamless transitions from first thinning to final fell applications. Application versatility maximizes long term value as markets fluctuate.



SIMPLIFICATION & IMPROVED TRAVEL.

An overall reduction in hose and fittings, an improved transmission mount, and redesigned lift arm hose routings reduce connection points and result in a simplified machine. Fully adjustable speed settings let the operator set working ranges and bump through the ranges during operation.



CAB DURABILITY.

The cab features integrated LED lights removing the light boxes from previous series. 1.7x thicker skylight with all cross bars removed provides an unobstructed view to tree tops. The new roof angle deflects debris more efficiently, and has an overall thicker cab roof for durability.



SAW CIRCUIT RELIABILITY.

An optimized saw circuit, that includes a dedicated saw valve results in more power and efficiency. Case drain filtration adds an additional level of protection and confidence to the system. Priority settings maximize saw recovery or propel to match the application.



EXCELLENT SERVICEABILITY.

Pressurized engine, hydraulic, and after treatment compartments keep debris out of the machine reducing clean out time. Ground level fuel fill, electric hydraulic oil fill pump, and excellent engine access deliver superior serviceability making it quick and easy to do daily maintenance.

B670A SPECIFICATIONS

| | | | | | | | | |
|--------------|-------------------|-----------|------------------|----------|---------|------------------|--------|--------|
| Engine Model | Cat® C7.1 Stage 5 | | Wheelbase | 115.0" | 2921 mm | Ground Clearance | 23.4" | 594 mm |
| Gross Power | 241 hp | 180 kW | Fuel Capacity | 81.6 gal | 309 L | Transport Width | 9' 11" | 3.03 m |
| Engine Speed | 1880 rpm | | DEF Capacity | 5.0 gal | 19 L | Transport Height | 11' 3" | 3.43 m |
| Weight | 39,656 lb | 17 988 kg | Hydraulic System | 71.1 gal | 269 L | Transport Length | 25' 4" | 7.73 m |

Base configuration includes 30.5L-32 26PR Tires, 221 Center Post Felling Saw and full tank of fuel. Weight deduct 1,720 lb (780 kg) for 28L-26 tires, add 840 lb (381 kg) for 30.5L-32 2X Ring tires, 0 lb (0 kg) for 67-34 tires. Height and ground clearance deduct 4.0" (10.2 cm) for 28L-26 tires, 2.9" (7.4 cm) for 67-34 tires.

POWERTRAIN

| |
|---|
| Cat C7.1 engine certified to EPA Stage 5 |
| Primary and secondary fuel filters, including water separator |
| Electric fuel priming and transfer pump |
| Centrifugal engine air pre-cleaner |
| 2-Stage engine air cleaner |
| Cross-flow cooling system with side by side cores |
| Swing out air conditioner condenser and fuel cooler |
| Hydraulic on demand reversing cooling fan |
| Electronic reversing pressurizing fan |
| 2-Speed, hydraulically shifted transmission |
| New higher ratio axles |
| Momentary front differential lock |
| On/off rear differential lock |
| Heavy-duty driveshafts |
| Lubed for life universal joints |
| Spring applied, hydraulically released parking brake |

OPERATOR ENVIRONMENT

| |
|--|
| Enclosed OPS/FOPS/ROPS certified cab with increased roof thickness |
| Unobstructed skylight |
| Reverse slope 3-piece windshield |
| High capacity HVAC system |
| Pressurized water tank under the cab |
| Air suspension seat with harness seat belt |
| Joystick steering controls |
| Adjustable operator controls |
| Weiler programming system |
| Terrain selection mode |
| Road steer mode |
| 6 speed selections |
| Joystick gather arm(s) controls |
| AM/FM/Bluetooth radio |
| 24V to 12V converter and two 12V power ports |
| 2 Beverage holders |

HYDRAULICS

| |
|---|
| Weiler software monitors performance and delivers power where needed |
| Variable displacement pumps, with load-sense hydraulics for max. efficiency |
| High performance, multi-functioning main control valve |
| Oversized in-tank filter |
| Dedicated saw circuit with case drain filter |
| Electric hydraulic oil fill pump |

ELECTRICAL

| |
|--|
| 24-volt electrical system with 2 12-volt batteries |
| Main disconnect switch with Diesel Exhaust Fluid (DEF) purge indicator light |
| 4 LED working lights integrated into the cab |

OTHER STANDARD EQUIPMENT

| |
|---|
| Double walled box section frames to support bending and twisting forces |
| Field proven dual tapered roller bearing upper and lower center hitch |
| Chrome plated lift arm and tilt pins |
| Ecology drains (engine oil, engine coolant, hyd tank, fuel tank, axles) |
| Tilt Cab |
| Pressurized engine, hydraulic and Clean Emission Module compartments |
| Ground level fuel fill |
| Hydraulic test ports for efficient service |
| Single side engine service |

OPTIONAL EQUIPMENT

| |
|---|
| CB Radio |
| Fire Extinguisher |
| Rearview Camera with 10" Monitor and 2 Additional Rear LED Lights |
| Product Link™ (PL243 Cellular or PL631 Satellite) |
| Carbide or Steel Cutting Teeth |
| 28L-26 Tires - Overall Width 117.0" (2.97 m) |
| 30.5L-32 Tires - Overall Width 119.1" (3.03 m) |
| 30.5L-32 2XRing Tires - Overall Width 119.1" (3.03 m) |
| 30.5L-32 2XRing Front Only Tires - Overall Width 119.1" (3.03 m) |
| 67-34 Tires - Overall Width 128.7" (3.27 m) |

WHEEL FELLER BUNCHER SAW SPECIFICATIONS

| 221 Center Post Felling Saw | | | 222 Side Cut Felling Saw | | | 232 High Capacity Bunching Saw | | |
|-----------------------------|----------|---------|--------------------------|----------|---------|--------------------------------|----------|---------|
| Accumulation Area | 5.1 ft² | 0.47 m² | Accumulation Area | 4.0 ft² | 0.37 m² | Accumulation Area | 8.6 ft² | 0.80 m² |
| Max Single Cut | 22.7" | 577 mm | Max Single Cut | 22.0" | 559 mm | Max Single Cut | 22.6" | 574 mm |
| Weight | 7,100 lb | 3220 kg | Weight | 6,554 lb | 2973 kg | Weight | 6,277 lb | 2847 kg |

SALES AND SERVICE

Sold and serviced exclusively through Weiler Forestry dealers worldwide

WARRANTY

12 months standard, extended warranty available